

The Original. Manual.

Lockride The Original is quick and easy to install. Feel free to contact info@lockride.nl if you have any questions and / or comments.

Required tools: **Torx T15** & **Inbus 4**.

Step 1. Remove the Bosch lock.



1.1 Remove the battery from the bicycle.



1.2 Unscrew the lock cap at the bottom with a Torx screwdriver.



1.3 Unclip the lock cap by gently bending it open to the sides.



1.4 Unscrew the two Inbus screws.

Step 2. Install The Original.



2.1 Install the Lockride bracket, but do not fully tighten the bolts yet.



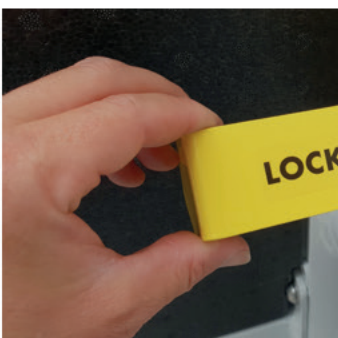
2.2 Click the battery into the bike and adjust the lock properly if necessary.



2.3 Tighten the bolts properly.



2.4 Click the cover back onto the Bosch lock. Screw the lock cap back on.



2.5 Slide the pin into the bracket and lock it with a disc or padlock.



2.6 Your battery is now protected against theft.



LOCKRIDE.

Model X. Manual.

Lockride Model X is quick and easy to install. Feel free to contact info@lockride.nl if you have any questions and / or comments.

Required tools: **Torx T15** & **Inbus 4**.

Step 1. Remove the Bosch lock.



1.1 Remove the battery from the bicycle.



1.2 Unscrew the lock cap at the bottom with a Torx screwdriver.



1.3 Unclip the lock cap by gently bending it open to the sides.



1.4 Unscrew the two Inbus screws.

Step 2. Remove the Bosch battery docking.



2.1 Unscrew the two housing parts with a Torx screwdriver.



2.2 Remove the left and right housing.



2.3 The connector can now be removed.



2.4 Dismount the bracket from the frame using the Inbus tool.

Step 3. Install the Model X.



Installing is almost the same as The Original, for images see step 2 on the back of this page.

3.1 Install the Lockride bracket using the holes from the Bosch lock (at the top) and docking (on the bottom) but do not fully tighten the bolts yet.

3.2 Click the battery into the bike and adjust the lock properly if necessary. Make sure there is as less space as possible between the bottom of the docking and the Lockride bracket.

3.3 Tighten the bolts properly.

3.4 Click the cover back onto the Bosch lock. Un-screw the lock cap back on.

3.5 Slide the pin into the bracket and lock it with a disc or padlock.

3.6 Your battery is now protected against theft.

LOCKRIDE.